



Total Food-Service Solutions

Modular Cooking – Meritus 750

Electric Induction Cooker

NEIC 4-75 MR



*Due to routine technical improvement, the photograph shown may not represent the latest design of the products.

AVAILABLE MODEL

1. NEIC 4-75 MR

DESCRIPTION

Electric Induction Cooker with 7 kW power rate. Provided with one ceramic glasses with 2 hobs on it and open cabinet. This Electric Induction Cooker is especially designed for many cooking purpose from sautéing until boiling. Featuring removable clip joint to connect Meritus family product.

ITEM# : _____

MODEL# : _____

NAME : _____

SN : _____

MAIN FEATURE

- Unit to be installed free standing, can be joined with base cabinet, table stand or cantilever system.
- Service maintenance can be done from the front panel.

CONSTRUCTION

- All exterior panels in 304 type of Stainless Steel
- Orbital top panel anti-scratch finishing.
- Top and side are mounted by 1.5 mm of Stainless Steel
- Adjustable ± 25 mm Stainless Steel leg.

INCLUDED ACCESSORIES

- N/A

OPTIONAL ACCESSORIES

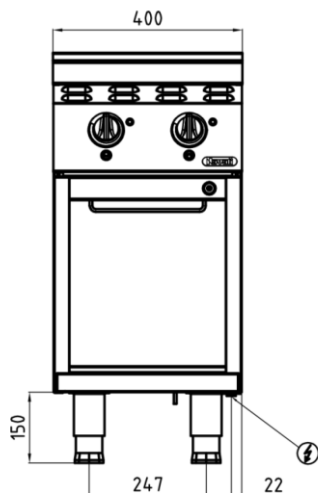
- Clip Plate for Joining

: _____

The company reserves the right to make modifications to the products without prior notice. All information correct at time of printing.
2018.08.07



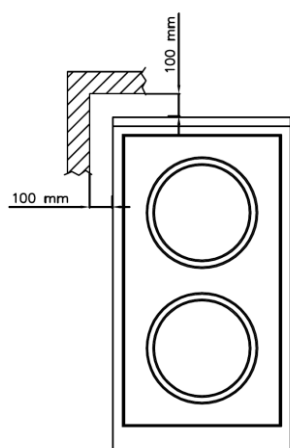
FRONT



ELECTRIC

Electrical rating (kW)	:	7
Element rating (kW)	:	7
Electrical supply voltage	:	400V 3N
Required electrical supply (amps):		16
Electrical current split (amps) :		L1: 16
		L2: 16
		L3: -

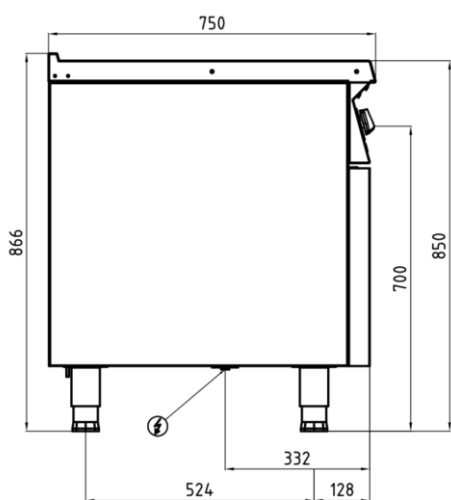
TOP



KEY INFORMATION

Unit dimension (WxDxH)	:	400x750x850/866.5 mm
Cooking surface (WxD)	:	2 x Ø 250 mm
Direct heat emission	:	1.4 kW
Latent heat emission	:	0.56 kW
Steam emission	:	0.82 kg/h
Shipping height	:	460 mm
Shipping width	:	840 mm
Shipping depth	:	1000 mm
Shipping volume	:	0.386 m ³

SIDE



* Overall Dimension in mm

The company reserves the right to make modifications to the products without prior notice. All information correct at time of printing. 2018.08.07